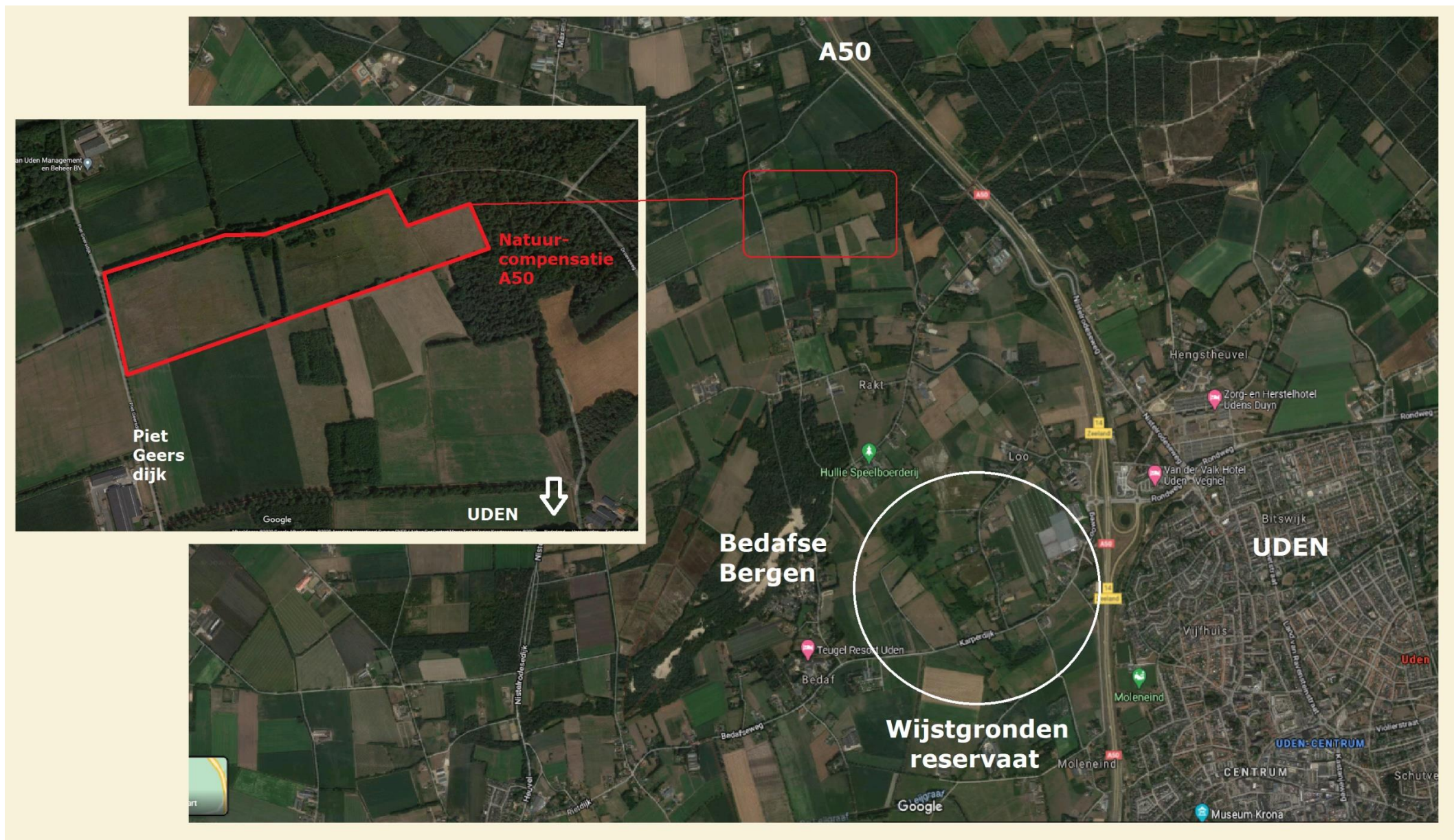
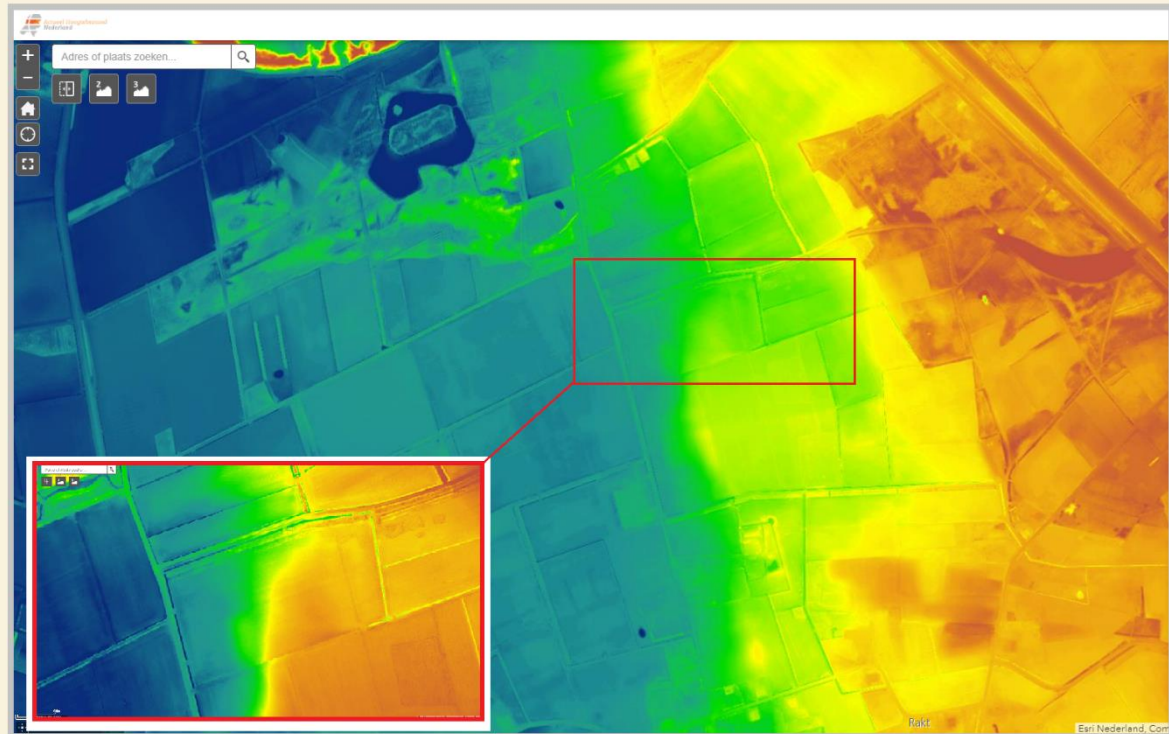
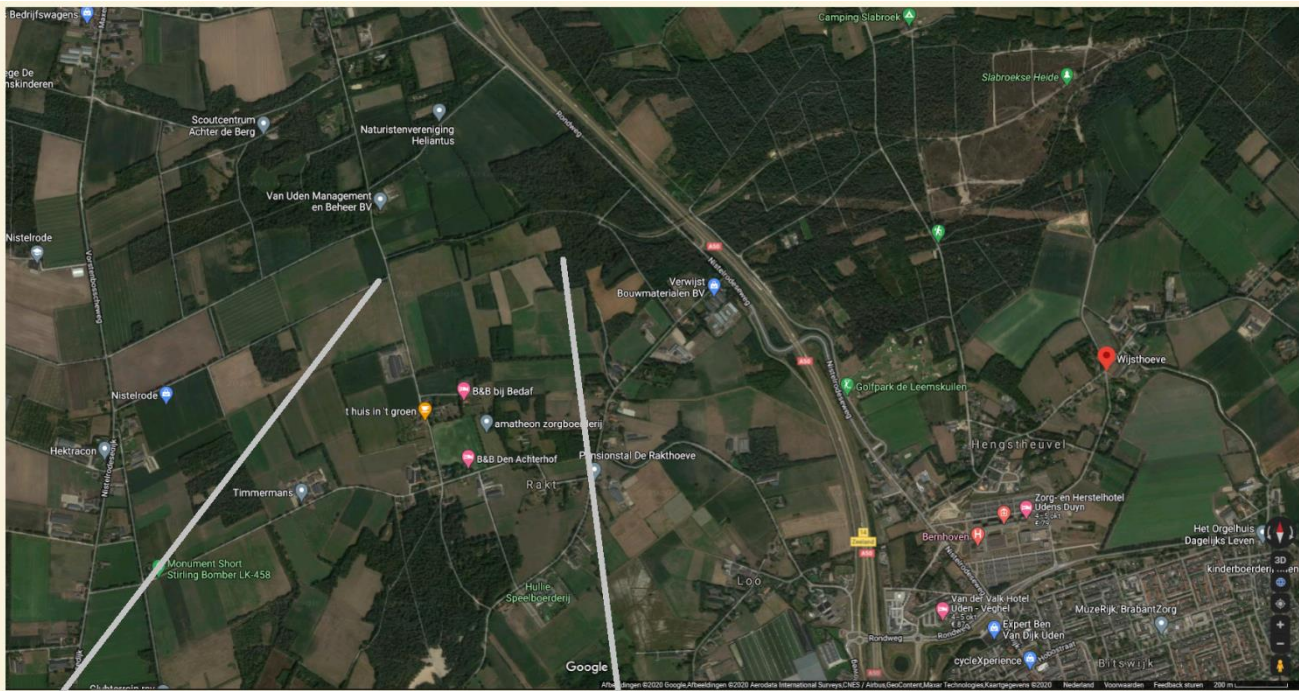
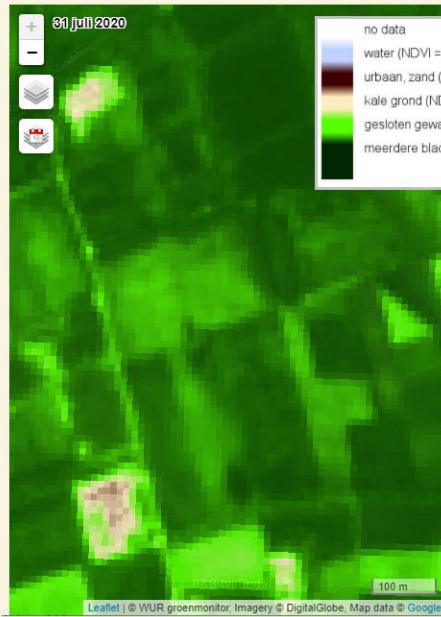
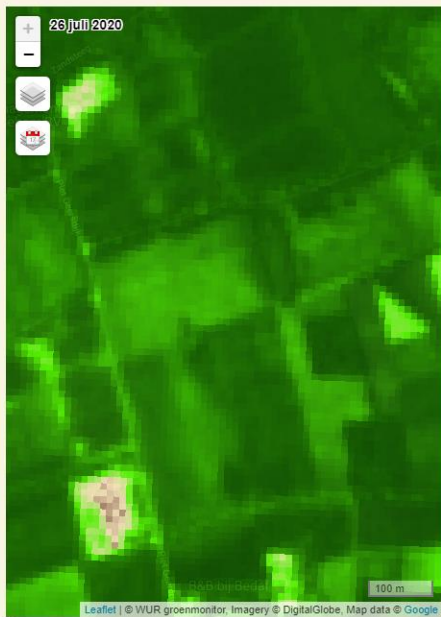
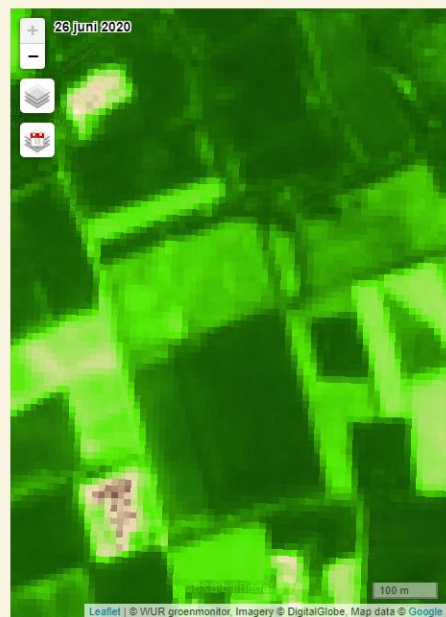


Herstelde Wijstgronden langs de Piet Geersdijk bij Uden (Natuurcompensatie A50)







Groenindex

- no data
- water (NDVI = 0, WDWI = 0)
- urbaan, zand (NDVI = 0.02, WDWI = 0.02)
- kale grond (NDVI = 0.2, WDWI = 0.1)
- gesloten gewas (NDVI = 0.6, WDWI = 0.2)
- meerdere bladlagen (NDVI = 1.0, WDWI = 0.6)

